

The New Mexico Network for Women in Science and Engineering

News from the New Mexico Network for Women in Science and Engineering Fall 2010

2010 Annual Meeting: Valles Caldera National Preserve —Dana Roberson

Special points of interest:

- Annual Meeting
- IMPACT! Award
- Letters from the Mailbag
- Joan Woodard 2009 IMPACT! Award Winner

The 2010 NMNWSE Annual Meeting will be held Oct 8-10 at the Valles Caldera National Preserve.

This is a splendid venue, so don't miss this chance to network with other NMNWSE members.



Registration is now open - we encourage you to register early as space is limited. Also, scholarships to cover some meeting costs are available to students presenting papers and members with exceptional circumstances - see the registration notes for details on the website:

<http://nmnwse.org/AM/2010/>

IMPACT! Award Nominations Sought —Nancy Weinbrenner

For over 22 years, I've worked as mathematician/analyst for the Department of Army and it's been my observation that woman do not do a great job of supporting each other in their careers. Of course there are exceptions to that rule and those are the women that need to be recognized. The IMPACT! Award was designed with our un-sung heroines in mind. Mostly likely you know one of these women. Just think for a second how satisfying it would be to have them recognized for their contributions to other women. Please don't let this opportunity pass by. If you've submitted a package in previous years, SUBMIT IT AGAIN!!!! How hard is that? Your nominee could easily win this year!! Before we know it will be time to present the IMPACT! Award.

Inside this issue:

President's Corner	2
Central Chapter Report	3
NMCWiC	4
Student Awards	5
Joan Woodard 2009 IMPACT! Winner	6
"Inspired Excellence"	7
Author to Speak at UNM	8
LAWIS EYH	8
Silver City EYH	9
Central EYH	9
Santa Fe EYH	10

(Continued on page 4)

President's Corner — Laurie Marnell

It has been important to my evolution as a woman and a scientist to participate in organizations for women in non-traditional careers. In the 80's with a small child at home, I enjoyed NMNWSE meetings, hearing about the wide range of careers in the group. When I moved to Tucson I immediately joined a chapter of the Association for Women in Science and was soon holding various offices in the organization. We were a small group and struggled to make an impact. Young women

seemed to feel that discrimination was a thing of the past. Studies by the Association for Women Faculty at the University of Arizona showed this to be false. The strong women I met there who were working hard to change the climate for women faculty at the University of Arizona were an inspiration to me. Upon returning to Albuquerque I rejoined NMNWSE because it is important to me to be involved with other women in STEM fields and to work to increase the numbers of women

in those fields.

This has been an exciting year to be part of NMNWSE. We have added a new EYH conference in Santa Fe and a new venue at CNM for the Albuquerque EYH. The EYH conferences are a great way to reach girls and get them excited about STEM careers. It is important for them to see women who have chosen to pursue careers in technical and scientific areas.

I also had the opportunity to judge science fair projects at the National American Indian Sci-



ence and Engineering Fair (NAISEF) and the New Mexico State Science and Engineering Fair. I am renewed with hope for the future, seeing girls with enthusiasm and a determination to change the world. I think that volunteering with the NMNWSE I get much more back than what I give.

We Get Letters: From the Mailbag

"May 28, 2010

New Mexico Network for Women in Science and Engineering,

I would like to thank you for your generosity and support during the Junior Science and Engineering Research Challenge. Your sponsorship has encouraged me to further my education and understanding in the science and engineering field. I am truly grateful for your enthusiasm in helping students like myself.

Thank you for the fifty dollar check and all the cool gadgets."

Central Chapter Report, 15 August 2010 — Jeanne Banks

The Central Chapter met at the home of Ellen Evans, former Network member and continued solid supporter, on August 11, 2010. The majority of the evening was spent catching up on your various summer endeavors and then planning for the next year's meetings.

Melanie Madrid, Coordinator for the YWCA's Technical Program for Girls, provided information about this "re-newed" program and asked for support and volunteers. Elizabeth Kallman, Central EYH Chair, provided a quick update for the current state of conference planning activities and will be sending a meeting notice for September 26, 2010. Laurie Marnell, State NMNWSE President, provided details of the Annual Meeting to be held at the Valles Caldera National Preserve on Oct 8-10, 2010 and encouraged everyone to register to attend on the website.

The schedule for upcoming Central Chapter meetings is:

December 8, 2010

February 9, 2011

April 13, 2011

June 8, 2011

Meeting locations will be announced when the Evite is sent for each meeting. Everyone was asked to provide suggestions for speakers and for meeting locations.

Jeanne Banks
Central Chapter Chair

National EYH Network Wins 2010 National Science Board's Public Service Award

The Expanding Your Horizons Network is the recipient of the 2010 National Science Board Public Service Award. Please visit

http://www.nsf.gov/news/news_summ.jsp?cntn_id=116684

To learn more!

*Nominees for the
IMPACT! Award must be
received by
Friday 17 September
2010.*

*Please visit
www.nmnwse.org
for more information*



IMPACT! Award continued.

(Continued from page 1)

DON'T DELAY, GET YOUR NOMINATION IN TODAY!!!!

Know it will take time, but when YOUR NOMINEE WINS, your sense of satisfaction and contribution will be enormous. So here is the LINK TO the form, and as my Dad used to tell me, GET TO IT!! PLEASE!!

<http://www.womenscommission.state.nm.us/> OR
http://nmnwse.org/ImpactAward/Impact_Nomination_Form.pdf

Also, I recommend you get letters of recommendation to help substantiate your package.

THERE IS STILL TIME!!!!

PLEASE don't hesitate to call me at my work numbers below if you'd like to talk about ANYTHING!!

Most Sincerely,

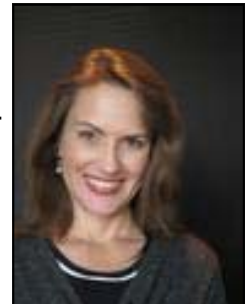
Nancy
410-278-5688 (o)
410-322-1030 (m)

2009 NMNWSE IMPACT! Award Winner to Speak at the New Mexico Celebration of Women in Computing Oct. 14-15



Jamesina Simpson

The first ever New Mexico Celebration of Women in Computing (NMWiC), a regional celebration modeled after the Grace Hopper Celebration of Women in Computing, is scheduled for October 14-15 at the University of New Mexico Centennial Engineering Center. Elizabeth Kallman, NMNWSE 2011 President, and Jamesina Simpson of NMSU and UNM respectively are co-chairs for this inaugural meeting. A featured speaker from industry is planned to be Dr. Joan Woodard, recipient of the 2009 IMPACT! Award.



Elizabeth Kallman

Sponsors include the National Science Foundation and Microsoft, and the two-day meeting is free. Registration can be completed online. Please visit: <http://ghregionalconsortium.org/upcoming.cfm> for information on this meeting, other regional celebrations, and the Grace Hopper Celebration of Women in Computing.

2010 NMNWSE Student Awards

Congratulations to all NMNWSE student award winners, and their teacher and mentors!

2009-2010 New Mexico Supercomputing Challenge

26-27 April 2010, Los Alamos National Laboratory, Los Alamos, NM

Team 70: **Peter Ahrens, Stephanie Djidjev, Vicky Wang, and Mei Liu**, Los Alamos High School. *To Kill a Flocking Bird*. Teacher: Lee Goodwin, Mentors: Christime Ahrens, James Ahrens.

Each student received \$50 and an NMNWSE tote bag with our Careers CD and other career materials, and their teacher also received a tote bag. Team 70 was also the overall 3rd place finisher. The SCC Expo provided the judges for this award.

2010 National American Indian Science & Engineering Fair

11-13 March 2010, Albuquerque Convention Center, Albuquerque, NM

Shania Harry, 8th grade, Tse Bit ai Middle School, New Mexico. *Does Juniper Ash contain Calcium?* (Chemistry)

Charlotte Kirk, 12th grade, Westville Public School, Oklahoma. *Energize: Optimization of a Process to Determine Algal Species in a sample through Single-Strand Conformational Polymorphism Prior to Fermentation into Algal BioFuels*. (Engineering: Electrical & Mechanical).

McKalee Steen, 6th grade, Grove Middle School, Oklahoma. *Did That Bud Emerge? Scarification and Stratification Effects Cercis Canadens and Cercis Canadensis ssp. Texensis "Oklahoma" Seed Germination*. (Plant Sciences)

Each winner received \$50 and an NMNWSE tote bag with career materials. Judges were Laurie Marnell and Tinka Gammel.

2010 New Mexico Science & Engineering Fair

9-10 April 2010, New Mexico Tech, Socorro, NM

The following students received \$50 and a tote bag with career materials:

Lilly Chiou, PR Leyva MS, Carlsbad, NM. *How Much Glucose is in Your Fruits?* (Jr Chemistry)

Riley McKinstry, Mountain View MS, Rio Rancho, NM. 'Solar Panel Cooling' (Jr Environmental Sciences)

Mariana Padilla, Santo Niño Regional Catholic School, Santa Fe, NM. *Home Remedies vs. Commercial Products for Whitening Teeth* (Jr Medicine and Health)

Savannah Doshier, Marshall Jr. HS, Clovis, NM. *Powerful Peanut* (Jr Physics and Astronomy)

Sara Hartse, Desert Academy at Santa Fe, Santa Fe, NM. *Freezing Point Depression: The Chemistry of Ice Cream Making* (Sr. Chemistry)

Myissa Weiss, Piedra Vista High School, Farmington, NM. *Gone with the Wind* (Sr Earth and Planetary Sciences)

Sophie Swingle, McCurdy HS, Abiquiu, NM. *SLF Communications: The Miners' Life Line* (Sr Engineering)

(Continued from page 5)

Laura Lane, Aztec HS, Flora Vista, NM. *Formatting Trends of Nematode Distribution...*
(Sr Environmental Sciences)

Laura Moore, Gallup Catholic HS, Gallup, NM. *The Monty Hall Problem* (Sr Mathematical Sciences)

Taylor Roach, St. Pius X HS, Albuquerque, NM. *Measuring Micro Leakage to Assess Performance of Various Composite Tooth Restorations* (Sr Medicine and Health Services)

The following students received a tote bag with career materials:

Annalee Romero, Barranca Mesa Elem Sch, Los Alamos, NM. *Effect of X-rays on Sprouting* (Jr Botany)

Alexandra Haigh, Hope Christian School, Corrales, NM. *Brix Levels and the Comparison of Organic and Conventional Fruits* (Jr Chemistry)

Katie Schneider, Rio Rancho Mid HS, Rio Rancho, NM. *Zoom! Faster is Better, Part 2* (Jr Engineering)

Rachel Robey, Los Alamos HS, Los Alamos, NM. *Energy Efficiency through Smart Wall Design*
(Sr Physics and Astronomy)

Fiona McCrossin, Las Cruces HS, Las Cruces, NM. *Dental Microwear and Diet of Terrestrial Plio-Pleistocene Colobine Monkeys* (Sr Zoology)

Judges for the NMNWSE Awards at the state science fair were Karen Agogino, Mercedes Agogino, Cheri Burch, Nan Founds, Tinka Gammel, Yolanda King, Laurie Marnell, and Clifton Murray.

Joan Woodard receives 2009 NMNWSE IMPACT! Award

NMNWSE in cooperation with the NM Commission on the Status of Women, honored

Joan Woodard, Executive Vice President and Deputy Laboratory Director for National Security Technologies and Systems for Sandia National Laboratories, with our Third Annual IMPACT! Award at the January 2010 Chapter meeting.

The award is given to a New Mexico woman for her extraordinary efforts in encouraging and helping women enter and succeed in science, technology, engineering and math as well as promoting networking and communication among women in these careers.

“Joan continually champions for women in non-traditional fields,” states Maria Elena Alvarez, award nominator. “Her outreach and visibility extends broadly – she is a life member of the Society of Women Engineers, on the Planning Committee for Lockheed Martin’s Annual Women’s Leadership Forum, and a member of the New Mexico Women’s Forum.”

During her tenure at Sandia National Laboratories, Ms. Woodard has mentored many women in engineering and technology. At the time of the Central Chapter January meeting, Joan was mentoring four women, and was also conducting “Walk and Talks” to speak with women in

“Inspired Excellence” – Submitted by Laurie Marnell

JULY 03, 2010 - JANUARY 03, 2011 at the National Museum of Nuclear Science & History.

<http://www.nuclearmuseum.org>

This special exhibition explores the life and world-changing scientific discoveries of two remarkable women: **Marie Curie-Sklodowska and Lise Meitner**. The exhibition, which opened on July 3, will deepen a visitor’s knowledge of the trials and tribulations that faced both and to showcase the spirit and contributions of each. These women endured incredible challenges during the Victorian era when women were not welcome in the field of scientific discovery. Despite a lack of financial support, unsophisticated academic facilities, and little recognition of their endeavors, they persevered and triumphed. Admission to the exhibit is included in admission to the Museum. The exhibit will be on display until the end of the year.

Location: The new National Museum of Nuclear Science & History is located at **601 Eubank Blvd. SE at Southern Blvd.**, six blocks *south* of Central Ave. and off of Interstate 40, exit 165.

Museum Hours: The museum is open daily 9:00 am to 5:00 pm. The museum is closed on New Year’s Day, Easter, Thanksgiving and Christmas Day.

Admission fees: Adults 18-59: \$8 Seniors 60+: \$7 Youth 6-17: \$7 Active Military: \$6
Children 5 and under: Free

(Continued from page 6)

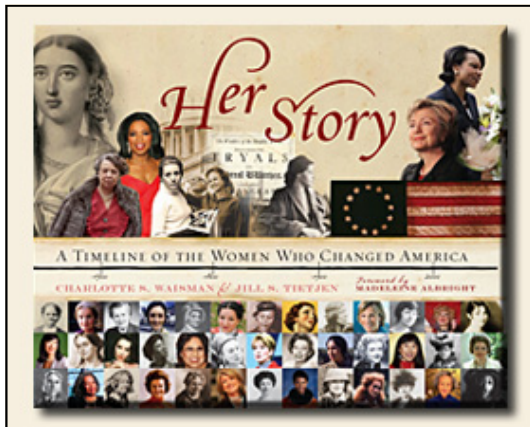
management about their accomplishment and issues.

Her outreach included presenting to the Laboratories’ new hires on “Research, Technology and Career Opportunities at Sandia National Laboratories;” chartering, sponsoring, and acting as lead speaker at a Sandia Women in Management Workshop; commissioning a Workforce Study to assess issues, particularly for women and minorities; and serving as a member and champion for the Sandia Women’s Action Network.

See the call for 2010 nominations in this newsletter.

The NM Network for
Women in Science
& Engineering
Award

Jill Tietjen, Author, to Speak at UNM on September 30 Hosted by Jamesina Simpson



Jill Tietjen, author of the book "Her Story: A Timeline of Women Who Changed America," to visit UNM from Colorado on Sept. 30th, 2010. She will talk for 3:00 pm in the Central Eng. Build. Auditorium and will be followed by a workshop:

"Writing Yourself Into History: An interactive audience-focused workshop. The leadership characteristics of women profiled in Her Story are identified. The audience explores whether they currently have those same types of traits and ways to acquire them. This presentation can also be ex-

panded to develop the leadership legacy of those in attendance."

Also, if anyone in NMNWE would like to meet with Jill or give her a tour of their work place / something in ABQ, please let them know that they can contact [Jamesina Simpson](mailto:simpson@ece.unm.edu) (simpson@ece.unm.edu) to coordinate.

Los Alamos (LAWIS) EYH, April 6 2010 —Georgia Pedicini

This year's activities included workshops on how airplanes fly, how to program mobile robots, and how to extract DNA from cheek cells. The girls also took a tour of the universe using sky image software, worked in a "crime lab," and learned about water quality.

Participants got to know one another over lunch and in two team activities. In a program highlight, the girls joined in singing

"Science, engineering, math/ and technology/ girls are going to change the world/ just you wait and see," a round that volunteer Aviva Sussman of Geophysics wrote to the tune of "Row Row Row Your Boat."

"Every year, we try different things," said 2010 EYH Co-Chair Georgia Pedicini of High Performance Computer Systems, who led the singing. "That keeps it fun for everyone."

A teacher conference ran simultaneously with Expanding Your Horizons, where speakers gave in-

(Continued on page 11)

Silver City EYH, March 27 2010

—Rosa Flores

This year's EYH conference was held in March at WNMU. We had a few unique changes from last year, including a separate session for high school girls we titled "Get a life" which focused more on colleges, and college prep. These older girls were given separate sessions from the younger girls and were given a more college experience with lunch at WNMU's cafeteria.

Our regular EYH conference did not include a morning session, but instead a conference style event with several booths set up with information about resources, activities that were all educational based and science, math and technology focused.

The girls did have three "hands on" conference sessions, with many returning presenters and some new presenters who did a wonderful job.

We hosted over 300 girls, had a pizza lunch and closing session with all girls, hosted by Ms. Autumn Kaiser.

Central EYH, April 3 2010



Tiffany Lampkin

The 2010 Albuquerque EYH was held at Central New Mexico Community college, with a unique panel discussion presented for the first time as the keynote event. The panel featured four dynamic young women who have chosen a technical career field: Tiffany Lampkin, General Engineer, Kirtland AFB, Jhana Gorman, Mechanical Engineer, Sandia National Laboratories, Rebecca Garcia, Geologist, and Kelly Gomez, Forensic Scientist, Albuquerque Police Department. The students were highly engaged



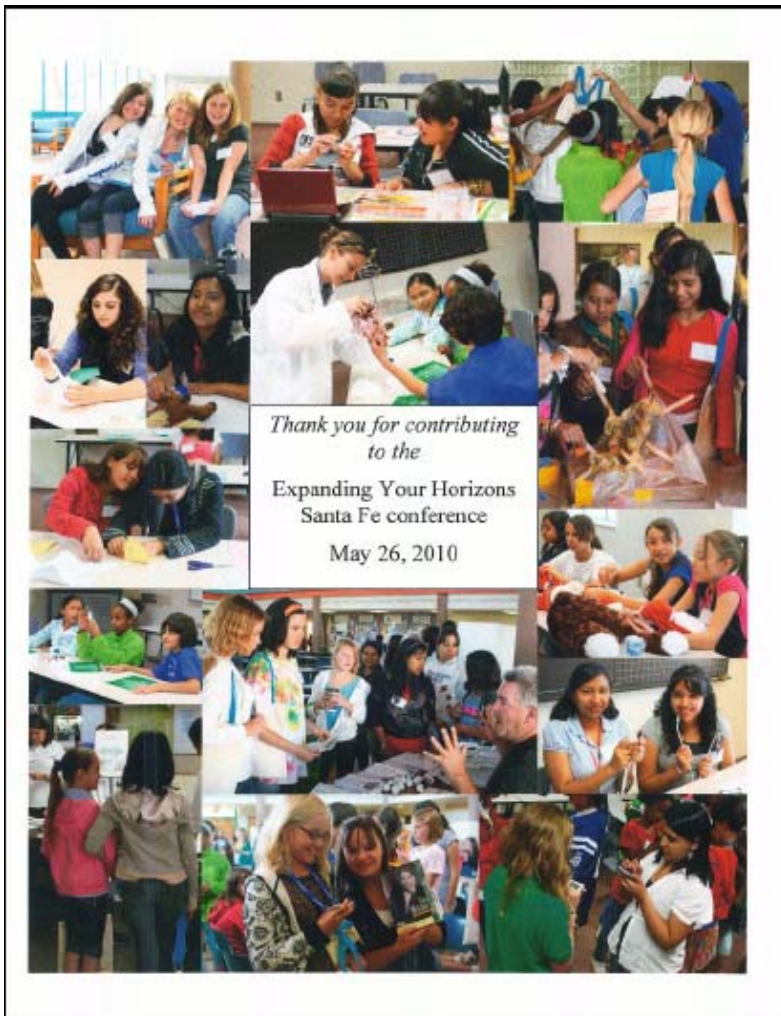
Jhana Gorman

with all of the panelists—all outstanding role models—and the panel discussion is again planned for next year. The adult program and student workshops followed the panel discussion, with 16 different workshops in three separate sessions. The closing session for students and adults included evaluations by the students and a raffle, with many giveaways for the students. The enthusiasm of the students was apparent! As Diane Albert, Central EYH Chair for 2010 remarked in her closing comments, the students "were amazing". Inspired by CEYH 2010, the planning meetings for CEYH 2011 have already started, with the first on August 26. We hope to see you at one of the planning meetings this fall for CEYH 2011!



Rebecca Garcia

Santa Fe EYH, May 26 2010



The first ever Santa Fe EYH commenced on May 26 2010 and by all measures was a smashing success.



Santa Fe EYH Panelists

Like the Albuquerque EYH, this event featured a panel discussion, with five panelists: Stephanie Garcia, an undergraduate student at NMSU, Shannon Hateley, a research assistant at the National Center for Genome Resources in Santa Fe, Elizabeth Martinez, a Web and User Support Specialist at the Santa Fe Institute, Angela Montoya, a recent MS in Structural Engineering from UNM, and Amy Wesolowski, a mathematics student at the College of the Atlantic. There were two consecutive workshop sessions, a lunch buffet, a sessions that included information on summer programs, internships/career fair, along with evaluations and raffle, and finally, a closing session. The grade range of participants was 5th-9th grade and there

(Continued on page 11)

(Continued from page 10)

were 152 student participants. Student feedback included “It was awesome to have a room with only girls and no boys!” and “This was an inspiring and very interesting conference to be a part of. It really made me want to persevere and achieve my goal of becoming a biomedical engineer.” And finally, “This program was fantastic! You shouldn’t change a thing.”

From Irene Lee, EYH Santa Fe co-chair, “The overwhelming number of women and men volunteers for this event was not only gratifying but also integral to the success of the event. We intend to nurture this new network of volunteers to start planning for next year’s EYH event in Santa Fe.”



Santa Fe EYH Volunteers

(Continued from page 8)

structors ideas for including more math and science in school curricula and lesson plans, and for exciting ways to teach science. In addition, teachers experimented with wind turbine kits funded by the Department of Energy.

Lab-wide, there were a half-dozen very involved members of the planning committee; about 18 presenters for 10 hands-on workshops for the students, and about 30 other conference-day volunteers, who helped with everything from setup to cleanup, registration to team activities.

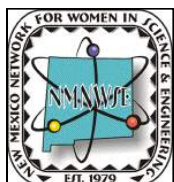


Students having fun at Los Alamos (LAWIS) EYH.

The New Mexico Network for Women in Science and Engineering

New Mexico Network for Women in
Science and Engineering
PO Box 1360
Los Alamos, New Mexico 87544

NMNWSE E-mail: nmnwse-l@list.unm.edu
Board E-mail: NMNWSE_Board-l@list.unm.edu



**Supporting women in science, engineering
and allied professions for over 30 years.**

NMNWSE encourages women to enter into, and develop their careers in science, engineering, and allied professions through annual technical symposia outreach, and local chapter activities.

We are a group of women scientists, mathematicians, educators, managers, community leaders, and parents, most of whom live and work in New Mexico.

Members get together to share common interests, to celebrate our successes, and learn about each other's work.

www.nmnwse.org